

INSOMNIAC CIA FACT SHEET

Overview & Components

INSOMNIAC CIA consists of the three main hardware components: The Gateway, Keypad and Relay Expansion Modules. A typical self-storage will utilize a Gateway and one more Keypads. The Relay Expansion Modules are typically used for elevator and lightning controls. The **Storage Genie mobile app** communicates with the keypad from the users mobile device using its' built-in Bluetooth Beacon technology .

Gateway

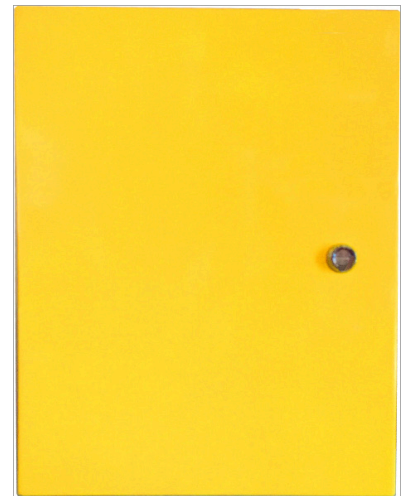
Enclosure: Indoor, Aluminum, Power Coated
Communications: RS485 (2), Optional Wireless (900 MHz), Ethernet
Secure Communications: Yes; No requirement for static IP; Open Ports or Port Forwarding
Form C Relay Outputs: 4
Auxiliary Inputs: 8
Wiegand Interface: 2
Tamper: Yes
Battery Backup Power: Yes
Device Power: Up to 16 Devices
Operating Voltage: 12-24 VDC
Operating Temperature Range: 22 – 120 F
Humidity: 0-95% Non-Condensing
Ingress Rating: IP44
Listed to UL Specification 294 for Access Control

Keypad

Enclosure: Indoor/Outdoor, Power Coated Aluminum
Lockable Design with Captive Screws and Hinged Faceplate
"Text Me My Code" Capability*
Bluetooth Beacon: Yes. For use with Storage Genie mobile app
Communications: RS485 (1), Optional Wireless (900 MHz)
Secure Communications: Yes
Display: 4 Line Organic LED (OLED) Customizable Display
Form C Relay Outputs: 2
Auxiliary Inputs: 4
Tamper: Yes
Wiegand Inputs: 1
Intercom: Yes
Camera: Optional
Operating Voltage: 12 - 24 VDC, 500ma
Operating Temperature Range: -31 – 150 F
Humidity: 0 – 95% Non-Condensing
Ingress Rating: IP55. Gasket to prevent moisture
Listed to UL Specification 294 for Access Control

*Allows tenants to retrieve their access code by text message.

*INSOMNIAC CIA is a registered trademark of OpenTech Alliance, Inc. All rights reserved.



CIA Gateway



CIA Keypad

INSOMNIAC CIA FACT SHEET

Relay Module

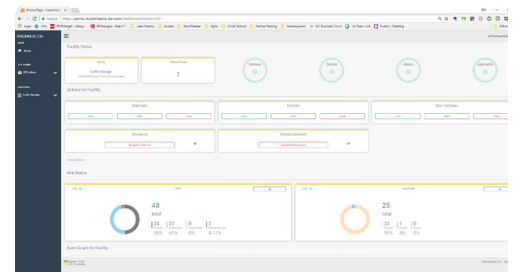
Enclosure: Indoor/Outdoor, Aluminum, Power Coated
 Communications: RS485 (1), Optional Wireless (900 MHz)
 Secure Communications: Yes
 Form C Relay Outputs: 8
 Auxiliary Inputs: 8
 Tamper: Yes
 Elevator Override Key: Yes
 Operating Voltage: 12-24 VDC
 Operating Temperature Range: -31 – 150 F
 Humidity: 0 – 95% Non-Condensing
 Ingress Rating: IP55. Gasket to prevent moisture
 Listed to UL Specification 294 for Access Control



CIA Relay Module

INSOMNIAC CIA Portal

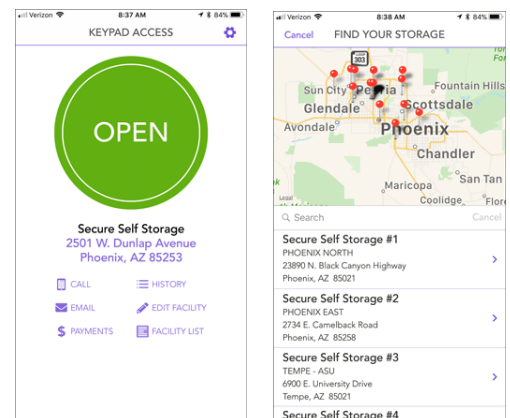
Web based software
 No software or PC required at property
 Access via PC, Mac, Tablet or mobile device
 User Dashboard
 Real-time diagnostics
 Data visualization and reporting
 Control one to thousands of properties
 Secure Communications: Yes; No requirement for static IP; Open
 Ports or Port Forwarding



INSOMNIAC CIA Portal

Storage Genie Mobile App

Compatible with Apple iOS or Android
 Bluetooth Beacon technology for secure “No Touch” operation -
 Allows tenants to enter & exit property, open doors, gates,
 elevators, etc. completely handsfree
 No requirement for PC at property
 Allows access to multiple properties
 Customer notification and alerts



Storage Genie Mobile App

Lightning/Surge Protection

Testing Lab: National Testing Systems (NTS)
 Power Inputs: 20,000V at 10,000 Amps
 RS485 Communications: 16,000V at 380 Amps